

Government of India  
Ministry of Earth Sciences  
India Meteorological Department



Press Release

Date: 31<sup>st</sup> October, 2024

Time of Issue: 1230 hours IST

**Subject: (i) Heavy Rainfall likely at isolated places over Tamil Nadu, Kerala and South Interior Karnataka during 31<sup>st</sup> Oct-02<sup>nd</sup> November.**  
**(ii) Above Normal Temperatures likely to continue over Northwest India and parts of Central and Eastern India during next 3-4 days.**  
**(iii) Delhi/NCR likely to experience smog/shallow fog/mist during the night and morning hours from 31<sup>st</sup> Oct-03<sup>rd</sup> November.**

**i) Rainfall Forecast and warning over the country**

**Realised rainfall during past 24 hours till 0830 hours IST of today (Annexure I)**

**Heavy rainfall** at isolated places over Tamil Nadu and Sikkim.

**Weather Systems:**

- ❖ A **cyclonic circulation** lies over Gulf of Mannar in lower tropospheric levels.
- ❖ An **upper air cyclonic circulation** lies over southwest Bay of Bengal off south Andhra Pradesh in lower & middle tropospheric levels.
- ❖ Another **upper air cyclonic circulation** lies over northeast Assam in lower tropospheric levels.

**Forecast & Warnings (upto 7 days) (Annexure II & III):**

- ✓ Light to moderate rainfall at a few places accompanied with isolated thunderstorm and lightning very likely over Kerala & Mahe during 31<sup>st</sup> October-04<sup>th</sup> November, Tamil Nadu, Puducherry & Karaikal during 31<sup>st</sup> October-03<sup>rd</sup> November and Karnataka during 31<sup>st</sup> October-02<sup>nd</sup> November; Coastal Andhra Pradesh & Yanam, Rayalaseema and Telangana on 31<sup>st</sup> October & 01<sup>st</sup> November, Konkan & Goa, Madhya Maharashtra and Marathwada on 31<sup>st</sup> October & 01<sup>st</sup> November.
- ✓ **Isolated heavy to very heavy rainfall** also very likely over Tamil Nadu, Puducherry & Karaikal and Kerala & Mahe on 01<sup>st</sup> November.
- ✓ **Isolated heavy rainfall** also very likely over Tamil Nadu, Puducherry & Karaikal during 31<sup>st</sup> October-02<sup>nd</sup> November; Kerala & Mahe during 31<sup>st</sup> October-03<sup>rd</sup> November and South Interior Karnataka on 31<sup>st</sup> October-02<sup>nd</sup> November.

**ii. Temperature conditions and Forecast**

**Temperature Conditions during past 24 hours till 0830 hours IST of today**

Maximum & Minimum Temperatures were above normal by 3-7°C over Northwest India. Minimum Temperatures were above normal by 3-5°C over parts of Central, Western and Eastern India.

## Forecast of temperature

- ✓ The above normal Temperature tendency over Northwest India and parts of Central India is likely to continue during next one week.

### iii. Weather forecast over Delhi/NCR during 31<sup>st</sup> October to 03<sup>rd</sup> November 2024

**Past Weather:** Currently both Maximum and Minimum temperature over Delhi are at the range of 33-36°C and 18-22°C respectively. These are above normal by 4 - 6°C. Mainly clear sky condition with variable wind speed reaching 04 – 10 kmph prevailed during daytime and weak/calm wind speed during night.

#### Weather Forecast:

**31.10.2024:** Mainly clear sky. The predominant surface wind is likely to be from Northwest directions with wind speed 04 - 10 kmph during morning hours. Shallow fog/ mist in the morning. The wind will gradually increase becoming 08 – 15 kmph during afternoon. It will decrease thereafter becoming less than 08 kmph during evening and night. Smog/shallow fog/ mist is likely in the night.

**01.11.2024:** Mainly clear sky. The predominant surface wind is likely to be from Northwest directions with wind speed 04 - 10 kmph during morning hours. Shallow fog/ mist in the morning. The wind speed will gradually increase becoming 10 – 14 kmph during afternoon. It will decrease thereafter becoming less than 05 kmph during evening and night. Smog/shallow fog/ mist is likely in the night.

**02.11.2024:** Mainly clear sky. The predominant surface wind is likely to be upto 04 kmph during morning hours. Shallow fog/ mist in the morning. The predominant surface wind is likely to be from Northeast/East direction with wind speed upto 06 – 08 kmph during afternoon. It will be less than 10 kmph from East/Northeast directions during evening and night. Smog/shallow fog/ mist is likely in the night.

**03.11.2024:** Mainly clear sky. The predominant surface wind is likely to be from Southeast/East direction with wind speed upto 08 kmph during morning hours. Shallow fog/ mist in the morning. The wind speed will gradually decrease becoming upto 06 kmph during afternoon. It will be less than 05 kmph from East directions during evening and night. Smog/shallow fog/ mist is likely in the night.

**For more details, kindly refer National Weather Bulletin:**

[https://mausam.imd.gov.in/responsive/all\\_india\\_forecast\\_bulletin.php](https://mausam.imd.gov.in/responsive/all_india_forecast_bulletin.php)

**For District wise warnings refer:** <https://mausam.imd.gov.in/responsive/districtWiseWarningGIS.php>

**For Fishermen warnings, kindly refer:**

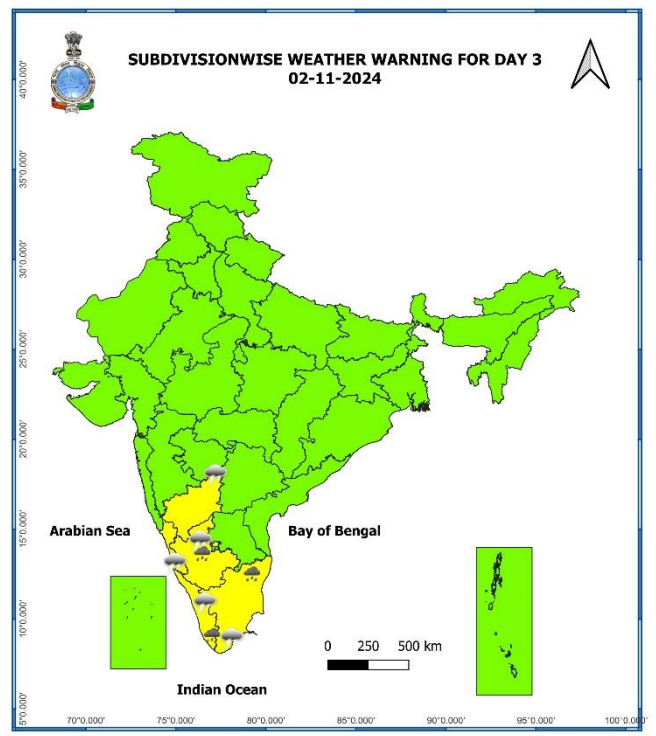
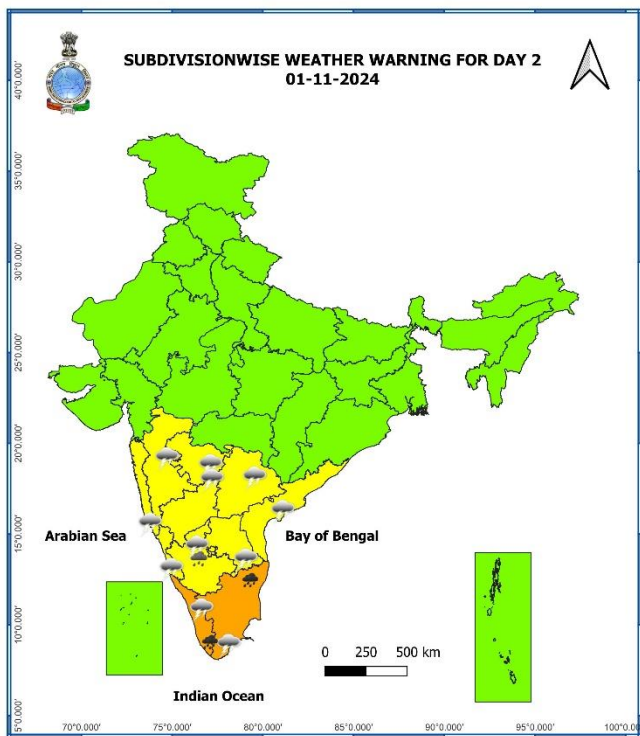
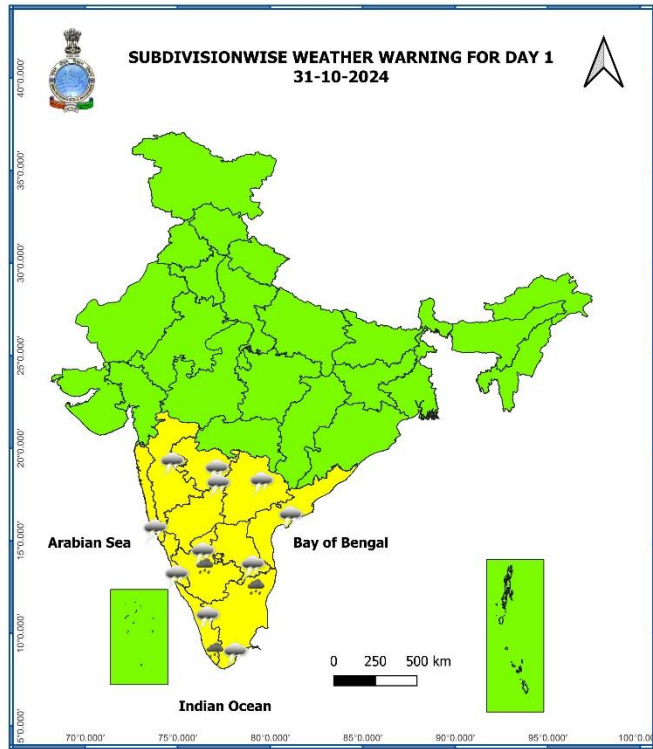
[https://rsmcnewdelhi.imd.gov.in/uploads/archive/51/51\\_bdf575\\_GRAPHIC.png](https://rsmcnewdelhi.imd.gov.in/uploads/archive/51/51_bdf575_GRAPHIC.png)

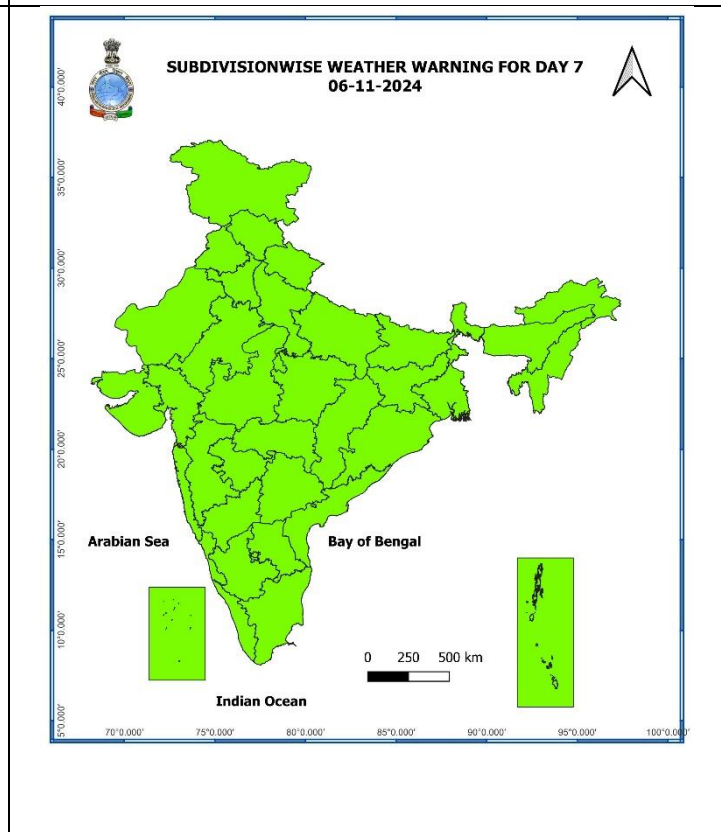
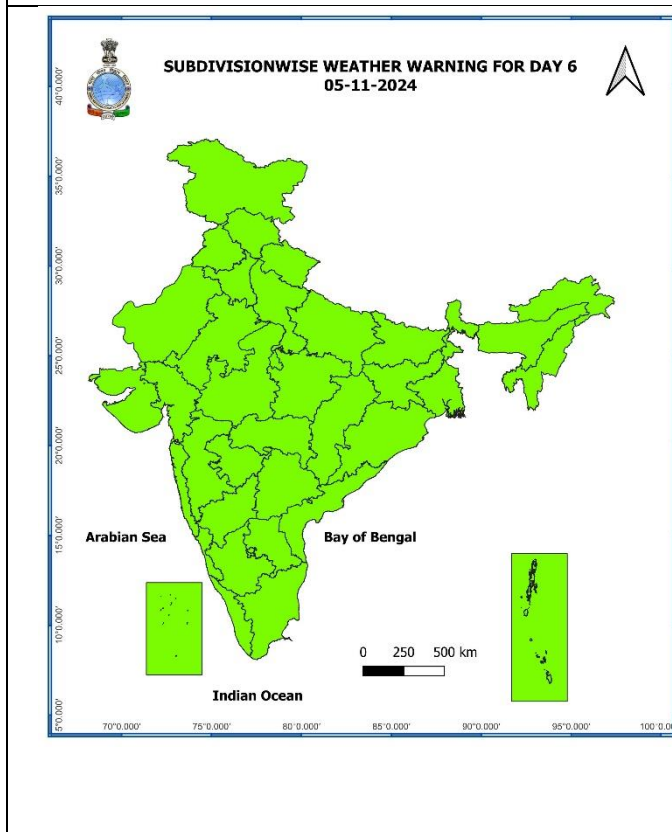
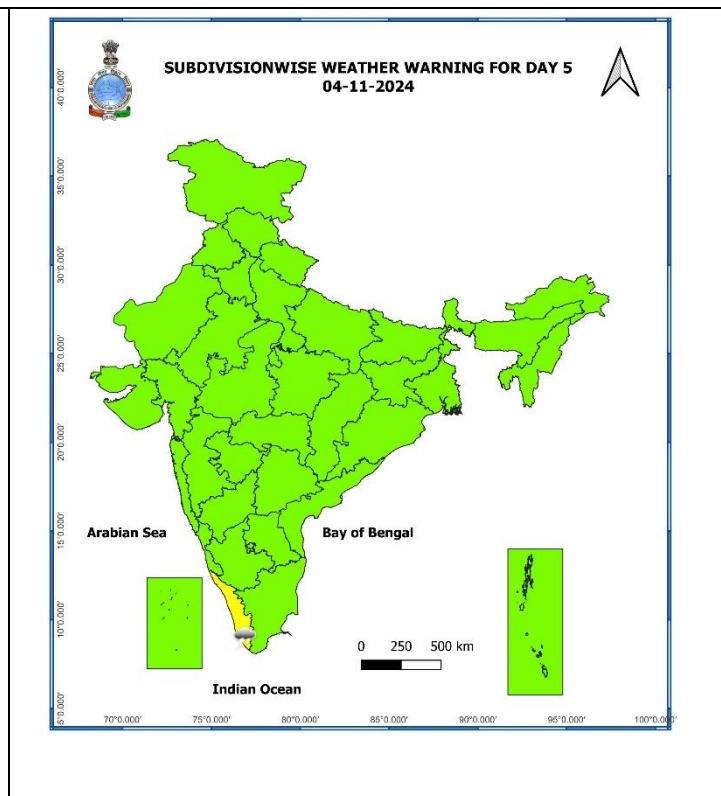
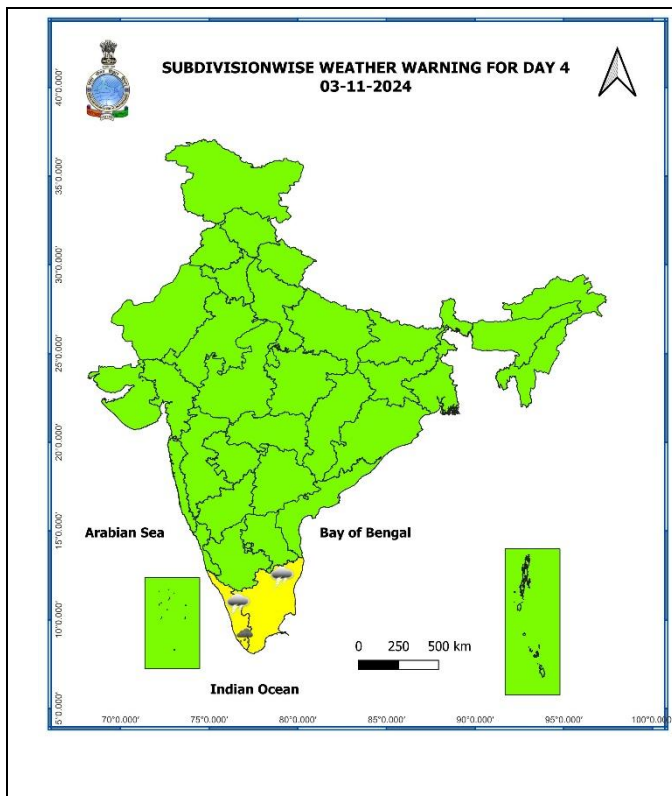
**Significant Rainfall recorded during past 24 hours till 0830 hours IST of today 31.10.2024 (in cm):**

- ❖ **Tamil Nadu:** Zone 08 Malar Colony (dist Chennai) 11; Good Will School Villivakkam ARG (dist Tiruvallur) 10; Ayanavaram Taluk Office (dist Chennai) 9; Zone 06 T.V.K Nagar (dist Chennai), Zone 06 D65 Kolathur (dist Chennai) 7 each; Zone 02 D15 Manali (dist Chennai), Zone 09 Teynampet (dist Chennai), Barur (dist Krishnagiri), Nedungal (dist Krishnagiri) 6 each; Kodambakkam (dist Chennai), Anna Nagar (dist Chennai), Chennai(N) AWS (dist Chennai), Vadapudupattu (dist Tirupathur), Chennai (N) (dist Chennai), Ambattur MW (dist Chennai) 5 each; Ammapettai (dist Erode), YMCA Nandnam ARG (dist Chennai), Bhavani (dist Erode), Kattumayilur (dist Cuddalore), Anna University (dist Chennai), Zone 02 Manali (dist Chennai), Zone 10 Kodambakkam (dist Chennai), Thalaigayyer (dist Nagapattinam), Thalaivasal (dist Salem), Thiru-Vi-Ka Nagar (dist Chennai) 4 each; Vepur (dist Cuddalore), Sairam Institution ARG (dist Chengalpattu), Tallakulam (dist Madurai), Manali (dist Chennai), Vaniyambadi (dist Tirupathur), MGR Nagar (dist Chennai), Madurai North (dist Madurai), ACS Medical College ARG (dist Kancheepuram), Perambur (dist Chennai), Anna University ARG (dist Chennai), BASL Manalurpet (dist Kallakurichi) 3 each;
- ❖ **Sub-Himalayan West Bengal & Sikkim:** Gangtok (dist Gangtok) 7, Neora (dist Jalpaiguri) 4, Sevoke (dist Darjeeling) 3, Nagarkata (dist Jalpaiguri) 3, Tadong (dist Gangtok) 3;
- ❖ **Telangana:** Khanapur (dist Warangal) 6, Nalgonda (dist Nalgonda) 5, Vicarabad (dist Vikarabad) 4, Malyal (dist Mahabubabad) 4, Pochampalle (dist Y. Bhuvanagiri) 4, Narmetta (dist Jangaon) 3, Ghanpurjskb (dist J. Bhupalpally) 3, Khammam Urban (dist Khammam) 3, Mutharam Mahadevpur (dist J. Bhupalpally) 3, Khammam(arg) (dist Khammam) 3, Sangem (dist Warangal) 3, Pargi (dist Vikarabad) 3, Ramannapeta (dist Y. Bhuvanagiri) 3, Jainoor (dist Kumaram Bheem) 3;
- ❖ **Assam & Meghalaya:** Srijangram Arg (dist Bongaigaon) 6, Amraghat (dist Cachar) 5, Majuli (dist Jorhat) 5, Dholai (dist Cachar) 3, Matijuri (dist Hailakandi) 3, Silchar (dist Cachar) 3, Lala Arg (dist Hailakandi) 3;
- ❖ **Arunachal Pradesh:** Bameng Circle Aws (dist East Kameng) 5, Anini\_aws (dist Dibang Valley) 3, Itanagar (dist Papumpara) 3;
- ❖ **Chhattisgarh:** Bijapur (dist Bijapur) 5, Sukma (dist Sukma) 4, Jagargunda (dist Sukma) 3;
- ❖ **South Interior Karnataka:** Harapanahalli (dist Vijayanagara) 5, Tarikere (dist Chikkamagaluru) 3;
- ❖ **Konkan & Goa:** Rajapur (dist Ratnagiri) 5, Kankavli (dist Sindhudurg) 3, Valpoi (dist North Goa) 3;
- ❖ **Gangetic West Bengal:** Rajnagar (dist Birbhum) 5;
- ❖ **North Interior Karnataka:** Haveri Pto (dist Haveri) 4, Dharwad (hos) (dist Dharwad) 3;
- ❖ **Coastal Andhra Pradesh:** Tiruvuru (dist Ntr District) 3;
- ❖ **Royalaseema:** Raju Palem (dist Ysr District) 3;
- ❖ **Jharkhand:** Narayanpur (dist Jamtara) 3;
- ❖ **Nagaland, Manipur, Mizoram & Tripura:** Kolasib Agri (dist Kolasib) 3, Kolasib\_aws (dist Kolasib) 3.

7 Days Rainfall Forecast								
S. No.	Subdivision	31-Oct	01-Nov	02-Nov	03-Nov	04-Nov	05-Nov	06-Nov
		Day 1	Day 2	Day 3	Day 4	Day 5	Day 6	Day 7
1	ANDAMAN & NICOBAR ISLANDS	SCT	SCT	SCT	FWS	FWS	FWS	FWS
2	ARUNACHAL PRADESH	SCT	SCT	SCT	ISOL	ISOL	ISOL	ISOL
3	ASSAM & MEGHALAYA	FWS	SCT	ISOL	ISOL	ISOL	ISOL	SCT
4	NAGALAND, MANIPUR, MIZORAM & TRIPURA	SCT	ISOL	ISOL	ISOL	ISOL	FWS	FWS
5	SUB-HIMALAYAN WEST BENGAL & SIKKIM	SCT	ISOL	ISOL	ISOL	ISOL	ISOL	ISOL
6	GANGETIC WEST BENGAL	ISOL	ISOL	DRY	DRY	DRY	ISOL	ISOL
7	ODISHA	ISOL	ISOL	ISOL	DRY	DRY	DRY	ISOL
8	JHARKHAND	DRY	DRY	DRY	DRY	DRY	DRY	DRY
9	BIHAR	DRY	DRY	DRY	ISOL	ISOL	DRY	DRY
10	EAST UTTAR PRADESH	DRY	DRY	DRY	DRY	DRY	DRY	DRY
11	WEST UTTAR PRADESH	DRY	DRY	DRY	DRY	DRY	DRY	DRY
12	UTTARAKHAND	DRY	DRY	DRY	DRY	DRY	DRY	DRY
13	HARYANA CHANDIGARH & DELHI	DRY	DRY	DRY	DRY	DRY	DRY	DRY
14	PUNJAB	DRY	DRY	DRY	DRY	DRY	DRY	DRY
15	HIMACHAL PRADESH	DRY	DRY	DRY	DRY	DRY	DRY	DRY
16	JAMMU & KASHMIR AND LADAKH	DRY	DRY	DRY	DRY	DRY	DRY	DRY
17	WEST RAJASTHAN	DRY	DRY	DRY	DRY	DRY	DRY	DRY
18	EAST RAJASTHAN	DRY	DRY	DRY	DRY	DRY	DRY	DRY
19	WEST MADHYA PRADESH	DRY	DRY	DRY	DRY	DRY	DRY	DRY
20	EAST MADHYA PRADESH	DRY	DRY	DRY	DRY	DRY	DRY	DRY
21	GUJARAT REGION	DRY	DRY	DRY	DRY	DRY	DRY	DRY
22	SAURASHTRA & KUTCH	DRY	DRY	DRY	DRY	DRY	DRY	DRY
23	KONKAN & GOA	ISOL	ISOL	ISOL	ISOL	DRY	DRY	DRY
24	MADHYA MAHARASHTRA	ISOL	ISOL	ISOL	ISOL	DRY	DRY	DRY
25	MARATHAWADA	ISOL	ISOL	ISOL	DRY	DRY	DRY	DRY
26	VIDARBHA	ISOL	DRY	DRY	DRY	DRY	DRY	DRY
27	CHHATTISGARH	ISOL	ISOL	ISOL	ISOL	DRY	DRY	DRY
28	COASTAL ANDHRA PRADESH & YANAM	ISOL	ISOL	ISOL	ISOL	ISOL	ISOL	ISOL
29	TELANGANA	SCT	ISOL	ISOL	ISOL	ISOL	ISOL	ISOL
30	RAYALASEEMA	ISOL	ISOL	ISOL	ISOL	ISOL	ISOL	ISOL
31	TAMILNADU PUDUCHERRY & KARAIKAL	SCT	FWS	FWS	SCT	SCT	ISOL	ISOL
32	COASTAL KARNATAKA	FWS	SCT	SCT	SCT	ISOL	ISOL	DRY
33	NORTH INTERIOR KARNATAKA	SCT	SCT	ISOL	ISOL	ISOL	ISOL	DRY
34	SOUTH INTERIOR KARNATAKA	FWS	SCT	SCT	ISOL	ISOL	ISOL	ISOL
35	KERALA & MAHE	FWS	FWS	FWS	FWS	FWS	SCT	SCT
36	LAKSHADWEEP	DRY	SCT	SCT	FWS	FWS	SCT	SCT

- As the lead period increases forecast accuracy decreases.





- Action may be taken based on ORANGE AND RED COLOUR warnings.
- Vulnerable regions likely urban and hilly areas action may be initiated for heavy rainfall warning.
- As the lead period increases forecast accuracy decreases.

## **Impact due to**

- ✓ **Isolated heavy to very heavy rainfall** very likely over Tamil Nadu, Puducherry & Karaikal and Kerala & Mahe on 01<sup>st</sup> November.

## **Impact Expected**

- ✓ Localized Flooding of roads, water logging in low lying areas and closure of underpasses mainly in urban areas of the above region.
- ✓ Occasional reduction in visibility due to heavy rainfall.
- ✓ Disruption of traffic in major cities and roadways due to water logging in roads leading to increased travel time.
- ✓ Minor damage to kutcha roads.
- ✓ Possibilities of damage to vulnerable structure.
- ✓ Localized Landslides/Mudslides/landslips/mud slips/land sinks/mud sinks.
- ✓ Damage to horticulture and standing crops in some areas due to inundation and wind.
- ✓ It may lead to riverine flooding in some river catchments (for riverine flooding please visit Web page of CWC)

## **Action Suggested**

- ✓ Judicious regulation of surface transports including railways and roadways.
- ✓ Check for traffic congestion on your route before leaving for your destination.
- ✓ Follow any traffic advisories that are issued in this regard.
- ✓ Avoid going to areas that face the water logging problems often.
- ✓ Avoid staying in vulnerable structure

## **Agromet advisories for Heavy Rainfall likely over Tamil Nadu, Kerala and South Interior Karnataka of the country**

- Drain out excess water from the standing crops in Tamil Nadu, Kerala and South Interior Karnataka.
- Keep the harvested produce at safer places.
- Provide mechanical support to horticultural crops and staking to vegetables.

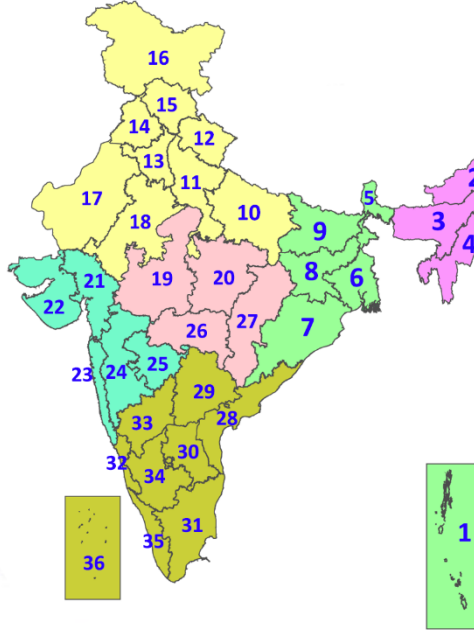
## Legends & abbreviations:

- ❖ **Heavy Rain:**64.5-115.5mm; **Very Heavy Rain:**115.6-204.4mm; **Extremely Heavy Rain:** >204.4mm.
- ❖ **Obsy:** Observatory; **AWS:** Automatic Weather Station; **ARG:** Automatic Rain Gauge; **dist:** District; **NH:** National Highway; **KVK:** Krishi Vigyan Kendra; **DVC:** Damodar Valley Corporation; **PTO:** Part Time Office, **Aero:** Aerodrome, **IAF:** Indian Air Force.
- ❖ **Region wise classification of meteorological Sub-Divisions:**
  - **Northwest India:** Western Himalayan Region (Jammu-Kashmir-Ladakh-Gilgit-Baltistan-Muzaffarabad, Himachal Pradesh and Uttarakhand); Punjab, Haryana-Chandigarh-Delhi; West Uttar Pradesh, East Uttar Pradesh, West Rajasthan and East Rajasthan.
  - **Central India:** West Madhya Pradesh, East Madhya Pradesh, Vidarbha and Chhattisgarh.
  - **East India:** Bihar, Jharkhand, Sub-Himalayan West Bengal & Sikkim; Gangetic West Bengal, Odisha and Andaman & Nicobar Islands.
  - **Northeast India:** Arunachal Pradesh, Assam & Meghalaya and Nagaland, Manipur, Mizoram & Tripura.
  - **West India:** Gujarat Region, Saurashtra & Kutch, Konkan & Goa, Madhya Maharashtra and Marathawada.
  - **South India:** Coastal Andhra Pradesh & Yanam, Telangana, Rayalaseema, Coastal Karnataka, North Interior Karnataka, South Interior Karnataka, Kerala & Mahe, Tamil Nadu, Puducherry & Karaikal and Lakshadweep.



## LEGENDS

1. अंडमान और निकोबार द्वीपसमूह
2. अरुणाचल प्रदेश
3. असम और मेघालय
4. नागालैंड, मणिपुर, मिजोरम और त्रिपुरा
5. उप-हिमालयी पश्चिम बंगाल और सिक्किम
6. गंगीय पश्चिम बंगाल
7. ओडिशा
8. झारखंड
9. बिहार
10. पूर्वी उत्तर प्रदेश
11. पश्चिम उत्तर प्रदेश
12. उत्तराखंड
13. हरियाणा, चंडीगढ़ और दिल्ली
14. पंजाब
15. हिमाचल प्रदेश
16. जम्मू और कश्मीर और लद्दाख
17. पश्चिम राजस्थान
18. पूर्वी राजस्थान
19. पश्चिम मध्य प्रदेश
20. पूर्वी मध्य प्रदेश
21. गुजरात
22. सौराष्ट्र
23. कोंकण और गोवा
24. मध्य महाराष्ट्र
25. मराठवाड़ा
26. विदर्भ
27. छत्तीसगढ़
28. तटीय आंध्र प्रदेश और यनम
29. तेलंगाना
30. रायलसेमा
31. तमिलनाडु, पुडुचेरी और कराईकल
32. तटीय कर्नाटक
33. आंतरिक उत्तरी कर्नाटक
34. आंतरिक दक्षिणी कर्नाटक
35. केरल और माहे
36. लक्षद्वीप



1. Andaman & Nicobar Islands
2. Arunachal Pradesh
3. Assam & Meghalaya
4. Nagaland, Manipur, Mizoram & Tripura
5. Sub-Himalayan West Bengal & Sikkim
6. Gangetic West Bengal
7. Odisha
8. Jharkhand
9. Bihar
10. East Uttar Pradesh
11. West Uttar Pradesh
12. Uttarakhand
13. Haryana, Chandigarh & Delhi
14. Punjab
15. Himachal Pradesh
16. Jammu & Kashmir and Ladakh
17. West Rajasthan
18. East Rajasthan
19. West Madhya Pradesh
20. East Madhya Pradesh
21. Gujarat
22. Saurashtra
23. Konkan & Goa
24. Madhya Maharashtra
25. Marathwada
26. Vidarbha
27. Chhattisgarh
28. Coastal Andhra Pradesh & Yanam
29. Telangana
30. Rayalaseema
31. Tamilnadu, Puducherry & Karaikal
32. Coastal Karnataka
33. North Interior Karnataka
34. South Interior Karnataka
35. Kerala & Mahe
36. Lakshadweep

## SPATIAL DISTRIBUTION (% of Stations reporting)

% Stations	Category	% Stations	Category
76-100	Widespread (WS/Most Places)	26-50	Scattered (SCT/A Few Places)
51-75	Fairly Widespread (FWS/Many Places)	1-25	Isolated (ISOL)

- |                      |                      |              |
|----------------------|----------------------|--------------|
| Fog                  | Heavy Snow           | Cold Wave    |
| Heavy Rain           | Dust Storm           | Cold Day     |
| Very Heavy Rain      | Heat Wave            | Ground Frost |
| Extremely Heavy Rain | Warm Night           |              |
| Thunder & Lightning  | Hot Day              |              |
| Hailstorm            | Hot & Humid          |              |
| Dust Raising Winds   | Strong Surface Winds |              |

### COLOUR CODED WARNING

- No Warning (No Action)
- Watch (Be Aware)
- Alert (Be Prepared To Take Action)
- Warning (Take Action)

### Probabilistic Forecast

Terms	Probability of Occurrence (%)
Unlikely	< 25
Likely	25 - 50
Very Likely	50 - 75
Most Likely	> 75

\* Red colour warning does not mean "Red Alert", Red colour warning means "Take Action".  
Forecast and Warning for any day is valid from 0830 hours IST of day till 0830 hours IST of next day.  
For more details, kindly visit <https://mausam.imd.gov.in> or contact: 011-2434-4599  
(Service to the Nation since 1875)

### DEFINITION/CRITERIA

<b>Rain/ Snow *</b>	<p><b>Heavy:</b> 64.5 to 115.5 mm/cm *</p> <p><b>Very Heavy:</b> 115.6 to 204.4 mm/cm*</p> <p><b>Extremely Heavy:</b> &gt; 204.4 mm/cm *</p>
<b>Heat Wave</b>	<p><b>When maximum temperature of a station reaches <math>\geq 40^{\circ}\text{C}</math> for plains and <math>\geq 30^{\circ}\text{C}</math> for hilly regions</b></p> <p><b>(a) Based on Departure from normal</b></p> <p><b>Heat Wave:</b> Maximum Temperature Departure from normal <math>4.5^{\circ}\text{C}</math> to <math>6.4^{\circ}\text{C}</math>.</p> <p><b>Severe Heat Wave:</b> Maximum Temperature Departure from normal <math>\geq 6.5^{\circ}\text{C}</math></p> <p><b>(b). Based on Actual maximum temperature</b></p> <p><b>Heat Wave:</b> When actual maximum temperature <math>\geq 45^{\circ}\text{C}</math>.</p> <p><b>Severe Heat Wave:</b> When actual maximum temperature <math>\geq 47^{\circ}\text{C}</math></p> <p><b>(c). Criteria for heat wave for coastal stations</b></p> <p>When maximum temperature departure is <math>&gt;4.5^{\circ}\text{C}</math> from normal. Heat Wave may be described provided maximum temperature <math>\geq 37^{\circ}\text{C}</math></p>
<b>Warm Night</b>	<p><b>When maximum temperature remains <math>40^{\circ}\text{C}</math></b></p> <p><b>Warm Night:</b> When minimum temperature departure <math>4.5^{\circ}\text{C}</math> to <math>6.4^{\circ}\text{C}</math>.</p> <p><b>Severe Warm Night:</b> When minimum temperature departure <math>&gt;6.4^{\circ}\text{C}</math>.</p>
<b>Cold Wave</b>	<p><b>When minimum temperature of a station <math>\leq 10^{\circ}\text{C}</math> for plains and <math>\leq 0^{\circ}\text{C}</math> for hilly regions.</b></p> <p><b>(a). Based on departure</b></p> <p><b>Cold Wave:</b> Minimum Temperature Departure from normal <math>-4.5^{\circ}\text{C}</math> to <math>-6.4^{\circ}\text{C}</math>.</p> <p><b>Severe Cold Wave:</b> Minimum Temperature Departure from normal <math>\leq -6.5^{\circ}\text{C}</math></p> <p><b>(b) Based on actual Minimum Temperature (for Plains only)</b></p> <p><b>Cold Wave :</b> When Minimum Temperature is <math>\leq 4.0^{\circ}\text{C}</math></p> <p><b>Severe Cold Wave:</b> When Minimum Temperature is <math>\leq 2.0^{\circ}\text{C}</math></p> <p><b>(c) For Coastal Stations</b></p> <p>When Minimum Temperature departure is <math>\leq -4.5^{\circ}\text{C}</math> &amp; actual Minimum Temperature is <math>\leq 15^{\circ}\text{C}</math></p>
<b>Cold Day</b>	<p><b>When minimum temperature of a station <math>\leq 10^{\circ}\text{C}</math> for plains and <math>\leq 0^{\circ}\text{C}</math> for hilly regions</b></p> <p><b>Based on departure</b></p> <p><b>Cold Day:</b> Maximum Temperature Departure from normal <math>-4.5^{\circ}\text{C}</math> to <math>-6.4^{\circ}\text{C}</math>.</p> <p><b>Severe Cold Day:</b> Maximum Temperature Departure from normal <math>\leq -6.5^{\circ}\text{C}</math></p>
<b>Fog</b>	<p><b>Phenomenon of small droplets suspended in air and the horizontal visibility <math>&lt; 1\text{km}</math></b></p> <p><b>Moderate Fog:</b> When the visibility between 500-200 metres</p> <p><b>Dense Fog:</b> when the visibility between 50- 200 metres</p> <p><b>Very Dense Fog:</b> when the visibility <math>&lt; 50</math> metres</p>
<b>Thunderstorm</b>	<p><b>Sudden electrical discharges manifested by a flash of light (Lightning) and a sharp rumbling sound (thunder)</b></p>
<b>Dust/Sand Storm</b>	<p><b>An ensemble of particles of dust or sand energetically lifted to great heights by a strong and turbulent wind.</b></p>
<b>Frost</b>	<p><b>Ice deposits on ground</b></p> <p>Air temperature <math>\leq 4^{\circ}\text{C}</math> ( over Plains)</p>
<b>Squall</b>	<p><b>A strong wind that rises suddenly, lasts for atleast 1 minute.</b></p> <p><b>Moderate:</b> Wind speed 52-61 kmph</p> <p><b>Severe:</b> Wind speed 62-87 kmph</p> <p><b>Very Severe:</b> Wind speed <math>&gt;87</math> kmph</p>
<b>Sea State</b>	<p><b>Effect of various waves in the sea over specific area</b></p> <p><b>Rough to very rough:</b> Wind speed 41-62 kmph (22-33 knots) &amp; Wave height 2.5-6 metre</p> <p><b>High to very high:</b> Wind speed 63-117 kmph ( 34-63 knots) &amp; Wave height 6-14 metre</p> <p><b>Phenomenal:</b> Wind speed <math>&gt;117</math> kmph (<math>&gt;63</math> knots) &amp; Wave height <math>&gt;14</math> metre</p>
<b>Cyclone</b>	<p><b>Cyclonic Storm:</b> Wind speed 62-87 kmph (34-47 knots)</p> <p><b>Severe Cyclonic Storm:</b> Wind speed 88-117 kmph (48-63 knots)</p> <p><b>Very Severe Cyclonic Storm:</b> Wind speed 118-165 kmph (64 - 89 knots)</p> <p><b>Extremely Severe Cyclonic Storm:</b> Wind speed 166-220 kmph (90 -119 knots)</p> <p><b>Super Cyclone Strom:</b> Wind speed <math>&gt;220</math> kmph (<math>&gt;119</math> knots)</p>

\* Red colour warning does not mean "Red Alert", Red colour warning means "Take Action".  
Forecast and Warning for any day is valid from 0830 hours IST of day till 0830 hours IST of next day.  
For more details, kindly visit <https://mausam.imd.gov.in> or contact: 011-2434-4599  
(Service to the Nation since 1875)